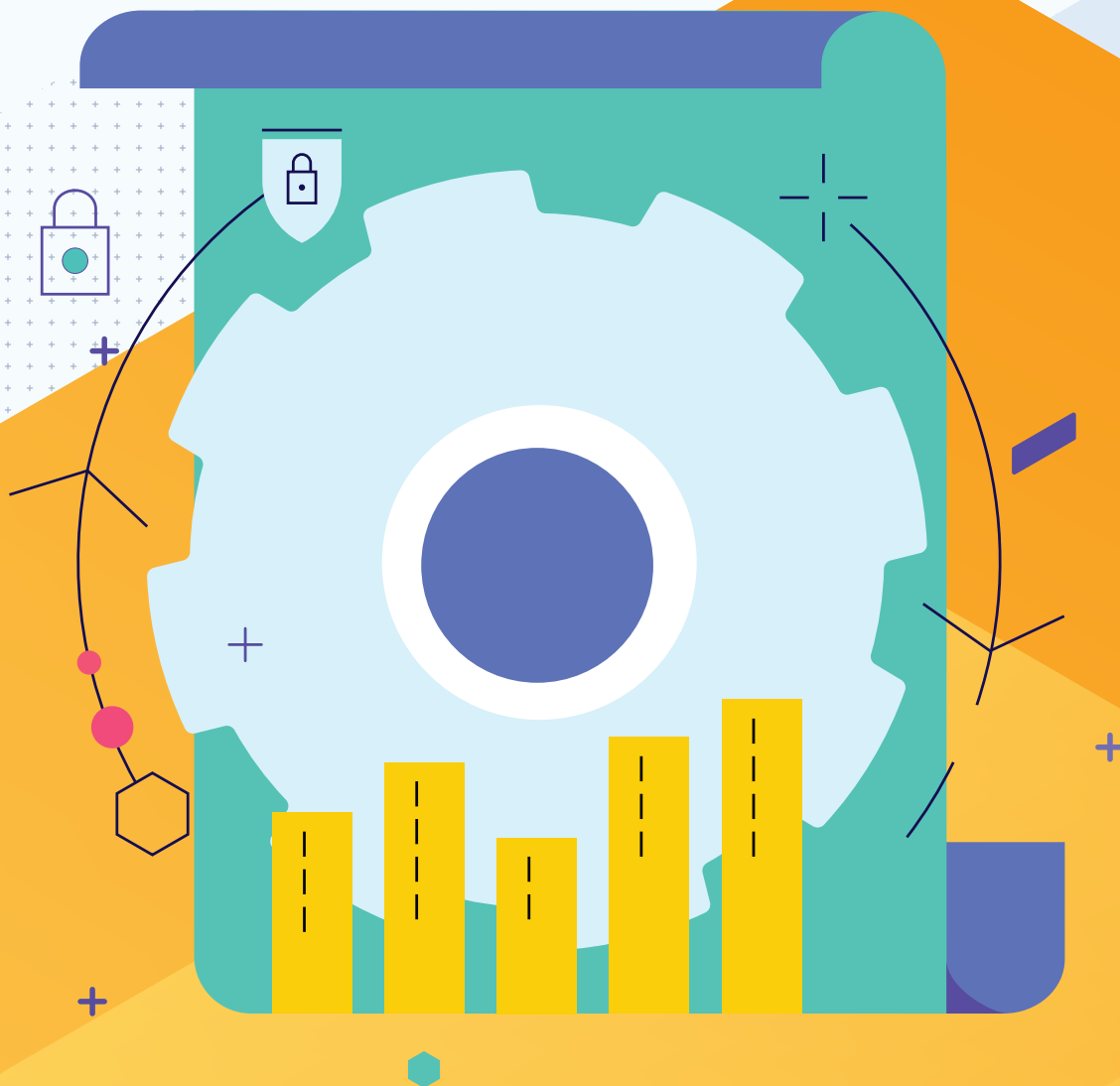




# Chef Infrastructure Management

Consistent, Secure and Scalable Configurations for any IT environment





Manual Infrastructure configuration and compliance management can be an error-prone, slow process that does not scale to modern infrastructure complexity.

**An automated approach to configuring infrastructure and maintaining compliance can scale across IT environments and lead to faster time-to-value, better control, and standardization between business units in an organization.**

Chef Infrastructure Management is a tool that helps enterprises automate their infrastructure configurations efficiently, securely, and reliably.

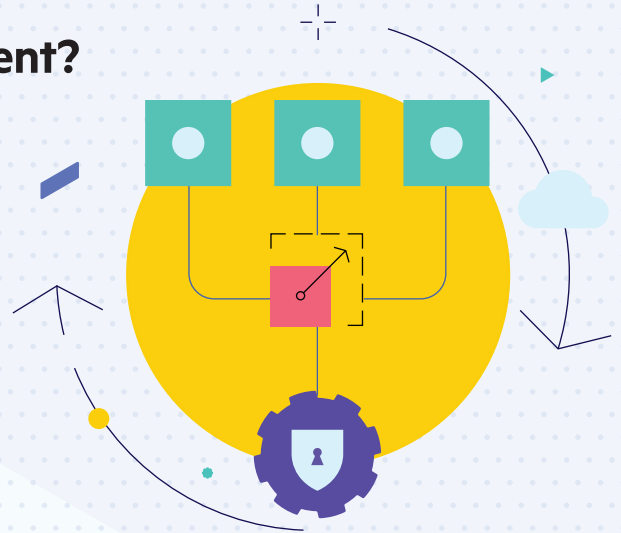
### Why Chef Infrastructure Management?

- **Secure, Scalable and Consistent Configurations**
- **Automated Remediation**
- **Support for Multi-Environment**
- **Centralized Governance**
- **Support High Security, Low-trust environments**
- **Continuous Delivery Pipeline Automation**
- **Actionable Insights**



# What is Chef Infrastructure Management?

Chef Infrastructure Management is an automation platform that allows organizations to configure and manage infrastructure across IT environments – on-prem, multi-cloud, VMs and containers, regardless of the underlying Operating System. Chef uses a Policy-as-Code approach to ensure fast, consistent, and secure configuration and compliance in any environment at scale with continuous automation.



## Feature Highlights

### Configuration Management

Chef uses Policy-as-Code to define configuration and compliance policies as code that are testable, enforceable and can be delivered at scale as part of automated pipelines.

### System State Enforcement

Chef ensures that the system state is maintained with planned or unstructured updates, also supporting the dynamic behavior of systems.

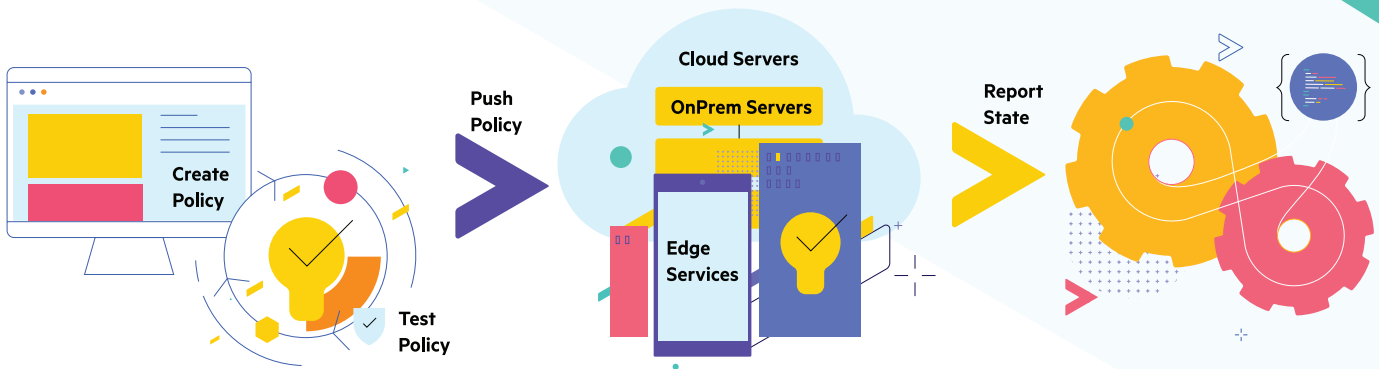
### Compliance and Security

Chef Infrastructure Management caters to the business security and compliance needs (based on DISA STIG and CIS benchmarks ) of organizations for all their IT resources across clouds, on-prem, VMs, and containers.

### Consolidated Fleet Visibility and Data Aggregation

Visual UIs and real-time interactive dashboards give a consolidated view of the configuration and compliance status of the IT fleet. At the same time, third-party integrations and data APIs provide data aggregation to enhance visibility.

## Infrastructure as Code With Chef



### Chef Workstation

Reduce risks by automating testing and validating before releasing changes to production.

### Chef Infra Server / Client

Enforce policy by converging the system to the state declared by the various resources.

### Chef Automate

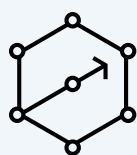
View and validate intended and actual state across all systems.

# Why Chef Infrastructure Management?



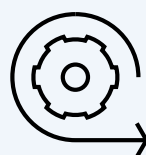
## Secure Management

Automate systems' adherence to the declared desired state and minimize security delays and fire drills.



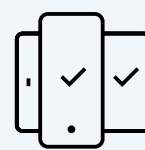
## Increased Scalability

With infrastructure defined in code, you can just as easily build 1 or 1 million servers depending on your business needs.



## Automated Remediation

Leverage event-driven automation that can immediately correct configuration drifts.



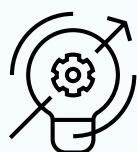
## Support for Multi-Environments

Automate infrastructure configurations across multi-OS, multi-cloud, on-prem, hybrid and complex legacy architectures.



## Centralized Governance

Manage your infrastructure and compliance with a single standardized tool.



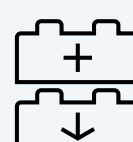
## Actionable Insights

Get real-time data that is easy to filter and provides reachable and actionable data for every node under management.



## Work in High-Security, Low-Trust Environments

Control access and accelerate delivery in highly regulated environments.



## Continuous Delivery Pipeline Automation

Enable developer services and drive pull-based CI/CD system workflows.

# What our Customers Say

“Core to Intility’s value is the ability to drive employee productivity which aligns to Chef’s vision of making the IT operators’ lives better.”

Stian Froystein, Linux Technical Lead, Intility

intility



“For us, the reason that Chef was so attractive was its incredible flexibility.”

Phil Dibowitz, Production Engineer, Meta

Meta



For more information on Chef Infrastructure Management, visit: [www.chef.io/products/chef-infrastructure-management](http://www.chef.io/products/chef-infrastructure-management)

## About Progress

Dedicated to propelling business forward in a technology-driven world, Progress (NASDAQ: PRGS) helps businesses drive faster cycles of innovation, fuel momentum and accelerate their path to success. As the trusted provider of the best products to develop, deploy and manage high-impact applications, Progress enables customers to build the applications and experiences they need, deploy where and how they want and manage it all safely and securely. Hundreds of thousands of enterprises, including 1,700 software companies and 3.5 million developers, depend on Progress to achieve their goals—with confidence. Learn more at [www.progress.com](http://www.progress.com)

2023 Progress Software Corporation and/or its subsidiaries or affiliates. All rights reserved. Rev 2023/04



- [facebook.com/getchefdotcom](https://facebook.com/getchefdotcom)
- [twitter.com/chef](https://twitter.com/chef)
- [youtube.com/getchef](https://youtube.com/getchef)
- [linkedin.com/company/chef-software](https://linkedin.com/company/chef-software)
- [learn.chef.io](https://learn.chef.io)
- [github.com/chef](https://github.com/chef)
- [twitch.tv/chefsoftware](https://twitch.tv/chefsoftware)